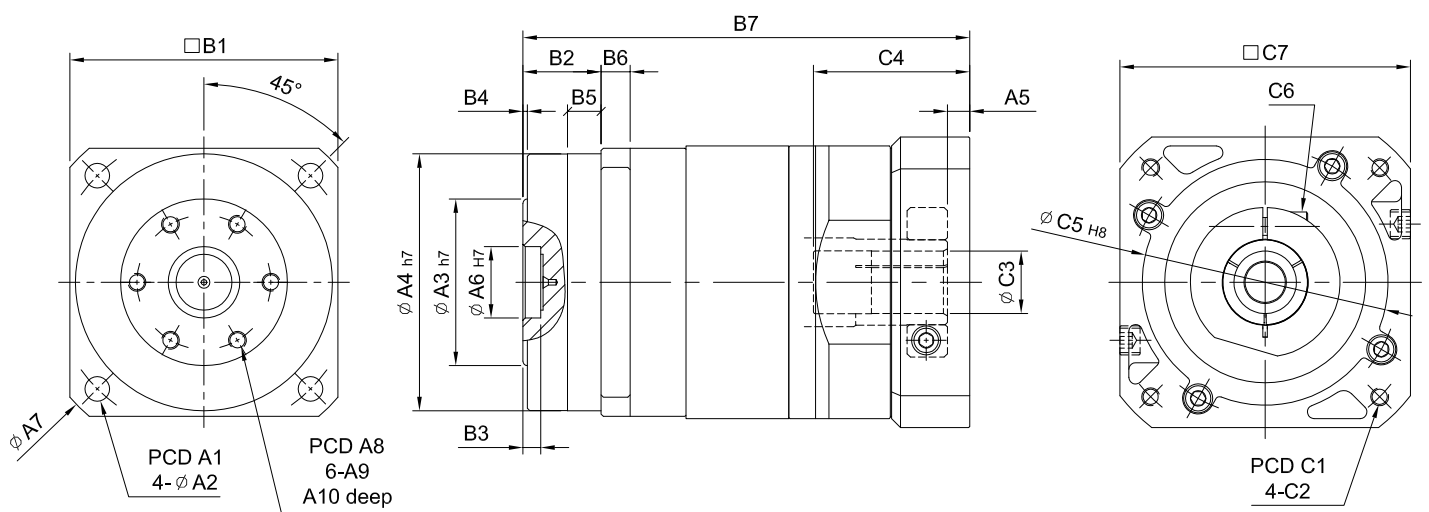
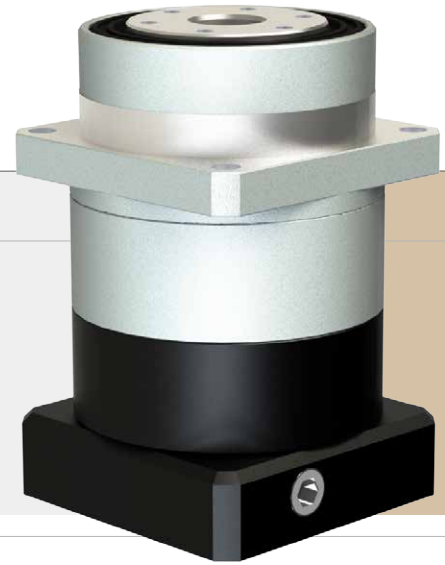


MODEL : FD

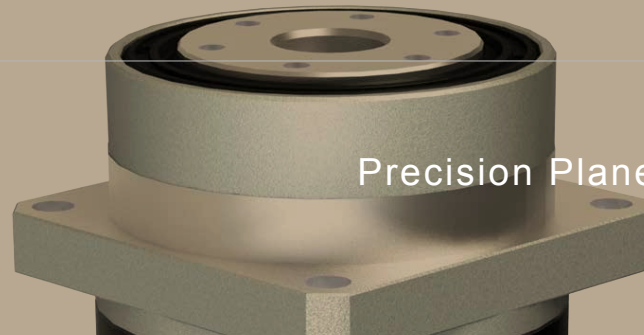
雙段 2-Stage

RATIO : 15, 20, 25, 30, 35, 40, 50, 70, 100



unit: mm

Model Code	60	90	120	170
A A1	70	105	135	190
A2	5.5	9	11	13
A3	38	59.6	74.6	119.6
A4	56	85	115	165
A5	5.5	5.5 · 6	10	10
A6	14	24	32	47
A7	80	119	158	218
A8	30	45	60	100
A9	M4xP0.7	M6xP1.0	M8xP1.25	M8xP1.25
A10	8	12	16	16
B B1	60	90	120	170
B2	21	27	35	53
B3	5	5	8	10
B4	1	1	2	2
B5	8	11	15	22
B6	8	10	13	16
B7	94.5	124.5 · 132.5	200	222 · 242
C C1	45 · 46 · 48.5 · 63 · 70	70 · 90	115 · 145 · 165	115 · 145 · 165
C2	M3 · M4 · M5	M5 · M6	M6 · M8 · M10	M6 · M8 · M10
C3	8 · 9 · 10 · 12.7 · 14	14 · 19	24 · 28 · 32	24 · 28 · 32 · 35
C4	33	33.5 · 41.5	70	67 · 82
C5	30 · 40 · 50	50 · 70	95 · 110 · 130	95 · 110 · 130
C6	M4xP0.7	M5xP0.8	M8xP1.25	M8xP1.25
C7	46 · 55 · 60	80	122 · 130 · 150	122 · 130 · 150



Precision Planetary Reducer

規格 Parameter	代號	單位 Unit	速比 Ratio	60	90	120	170
額定輸出扭矩 Rated Output Torque (Nominal output torque)	T_{2N}	Nm	15	15	112	216	553
			20	20	110	208	491
			25	25	108	333	510
			30	30	112	216	553
			35	35	105	309	473
			40	40	110	208	491
			50	50	108	333	510
			70	70	105	309	473
			100	100	100	294	542
最大加速扭矩 Max. Acceleration Torque	T_{2B}	Nm	15~100	1.8 倍額定輸出力矩 1.8 Times of Rated Output Torque			
最大輸出扭矩 Max. Output Torque 急停扭矩 Emergency Stop Torque	T_{2NOT}	Nm	15~100	3 倍額定輸出力矩 3 Times of Rated Output Torque			
額定輸入轉速 Rated Input Speed	n_{1N}	rpm	15~100	3,000			
最大輸入轉速 Max. Input Speed	n_{1B}	rpm	15~100	5,000			
背隙 Backlash Ps		arcmin	15~100	≤ 3	≤ 3	≤ 3	≤ 3
背隙 Backlash P0		arcmin	15~100	≤ 5	≤ 5	≤ 5	≤ 5
背隙 Backlash P1		arcmin	15~100	≤ 7	≤ 7	≤ 7	≤ 7
背隙 Backlash P2		arcmin	15~100	≤ 9	≤ 9	≤ 9	≤ 9
扭轉剛性 Torsional Rigidity		Nm/arcmin	15~100	4	12	27	49
容許徑向力 Max. Radial Force	F_{2rB}	N	15~100	460	1,400	2,260	3,300
容許軸向力 Max. Axial Force	F_{2aB}	N	15~100	230	660	1,130	1,650
使用壽命 Service Life	L_H	hr	15~100	S5 周期運轉 : >30,000(S1 連續運轉 : >15,000 小時) S5 Cycle Operation : >30,000(S1 Continuous Operation : >15,000hrs)			
效率 Efficiency	η	%	15~100	≤ 94 %			
使用溫度 Operating Temperature		°C	15~100	-25 °C ~ +90 °C			
潤滑 Lubrication			15~100	全合成潤滑油脂 Synthetic Grease			
防護等級 Protection Class			15~100	IP 65			
安裝方向 Mounting Position			15~100	任意方向 Any			
噪音值 Noise Level		dB	15~100	≤ 58	≤ 62	≤ 65	≤ 67
重量 Weight ±2%		Kg	15~100	1.24	3.3		

■ 轉動慣量 Mass Moments of Inertia (kg.cm²)

Ratio	60	90	120	170
15	50	0.45	3.21	-
20	68	0.42	2.8	6.63
25	22	0.42	2.71	6.63
30	50	0.42	3.21	-
35	63	0.42	2.54	6.55
40	68	0.42	2.8	6.63
50	72	0.42	2.71	6.63
70	63	0.42	2.54	6.55
100	45	0.42	2.51	6.46